



SE24: Review of 2022 and Forward Look to 2023.

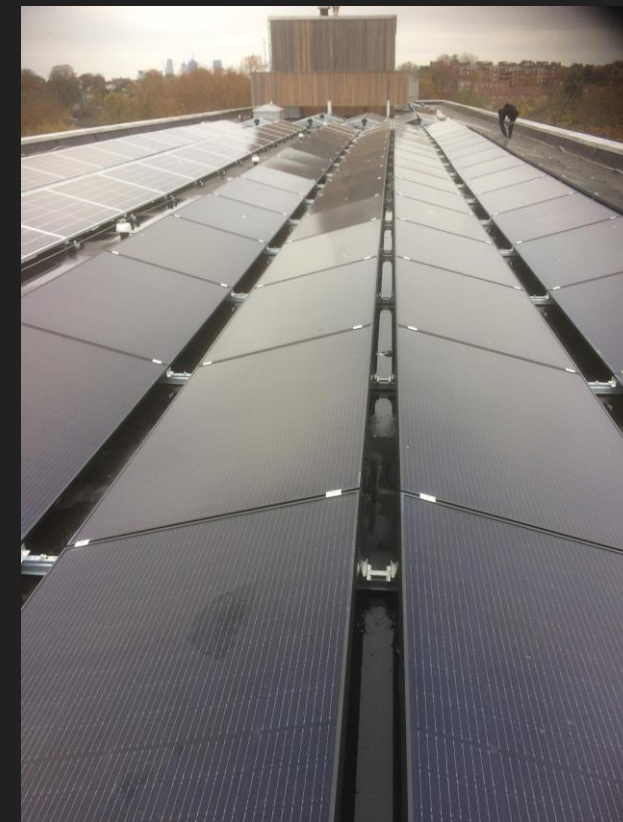
At Carnegie Library, Herne Hill, 15th January 2023

www.se24.co.uk

SE  24 SUSTAINABLE ENERGY

2022: Charter Projects

- LED projects at Charter North Dulwich and Charles Dickens
- Solar installations operational at Charter North Dulwich across all three buildings in February.
- SE24's first commercial export agreement, with Drax Power.



2022: Solar Operations & Maintenance

- O&M, including online monitoring, is crucial to ensuring optimum generation performance and income.
- Overall performance in 2022.
- The challenges.





2022: LCEF 5 LED projects

- LED lighting installation at Goodrich Community Primary School – 465 lamps/fittings replaced with LEDs, completed October 2022, est. annual savings > £15,000.
- LED feasibility – 3 lighting surveys at Southwark schools: Lyndhurst and Dulwich Hamlet (The Charter Schools Educational Trust) and Ark Global Academy.
- LED pre-feasibility – 6 initial site visits in Southwark: 4 schools and 2 other community premises. Project developed in close co-ordination with Southwark Council.



2023: Current and potential future projects

- Feasibility assessments for Retrofit Action For Tomorrow (RAFT):
 - Schools in/around South London belonging to the Anglican Diocese of Southwark
 - 14 solar PV and 9 LED feasibility assessments, to be completed in January
- Potential projects under LCEF 6 (grant applications to be submitted by 5 February):
 - LED installation at 3 Southwark schools: Lyndhurst, Dulwich Hamlet, Ark Global Academy
 - Energy-efficiency and low carbon heating feasibility at Belham Primary School (with RAFT)
 - LED feasibility/lighting surveys at schools and other sites from LCEF 5 pre-feasibility project



Involving Volunteers

- 5 new volunteers have completed the LED training program delivered by SELCE (South East London Community Energy); 2 further volunteers have completed some of the training
- 6 volunteers have assisted with 8 LED surveys and 1 solar PV survey at local community organisations
- 45 volunteer-hours spent in total on LED surveys and 1 volunteer-hour on solar



Involving Volunteers

- Nadia, SELCE: *"Well done on finding such enthusiastic and competent volunteers...the LED volunteers have been very engaged and took to it quickly...they've been very helpful on site, and have definitely sped the surveys up"*
- Volunteer, Marko: *"I've gained new experience and knowledge. I enjoyed the workshops on learning about how to estimate savings from lighting replacements to LED and what it means especially in today's cost of living crisis"*
- Volunteer, Carol: *"I wanted to volunteer to help with the LED surveys because in the era of climate change, I feel it is very important to conserve energy, and these surveys are one way to help with this, as well as helping the organisations to lower their bills. During the survey, I enjoyed the chance to help in a practical way; Lawrence and Nadia (from SELCE) were very welcoming and helped me to learn quickly about how to recognise different types of light fittings and bulbs, and how to enter the details using the software, and I feel inspired to assist on future ones whenever this is possible."*



Involving Volunteers

- Volunteer, Mark: *"I really enjoyed the 2 days doing the survey with Lawrence and Nadia. It has certainly increased my own awareness of how much can be saved by switching to LED, so much so that I have been through my own home and switched to LED bulbs throughout! It's rewarding to know that by giving a little time now and then, we can do our own little bit for the planet, and hopefully help schools save financially and put those saved funds to better use".*



Involving Volunteers

- 4 new areas for volunteer involvement in 2023:
 - Grant applications
 - Project management
 - Operations and management (O&M) of SE24 portfolio
 - Financial modelling



SE24 Financial Health

- Bank Balances today (in Winter) nearly £50k vs £20k Jan 2021 and £10-13k in 2019/20
- Well above our prudent reserves (maybe £15-20k)
- Reflecting increased RPI plus op cost increases at our solar sites
- Gives us more Community project funding potential in 2023



SE24 Delivering Benefits to our site Partners

- Average solar own consumption site tariffs are c 14p/kWh vs c 30p for grid Suppliers
- Savings for our solar sites (on-site consumption some 160 MWhs) some £25k
- At DC the annual saving of £12k much exceeded “offer” proposals of £4k
- At CND/CD the LED schemes are now saving the sites about £35k per year vs original projections of less than £20k..this after SE24 cost recovery
- This is a big success story
- We need to spread the word



Transition to Share Energy

- At long last we have found and contracted to shift to an out-sourced admin provider for much more of our admin
- Shareenergy will do much of our billing, our accounts and tax returns (previously out-sourced with Shruti), our VAT returns, and most of our general shareholder comms and payments mechanics.
- We will still be in charge and responsible for the business but it will free us up to go for growth and establish new opportunities, as you have heard from Paul earlier
- There is a transition that we are going through...some of us a bit busy with that!



New Share Offer in the offing

- You have heard from Paul that there are a variety of projects that are being pursued and there are others that we would welcome for a new Share Offer this coming late Spring/Summer
- There is pent up demand being released by current high energy prices; we may not have contacts with all potential participants
- We would love to hear of potential project partners to get on board with our next Share Offer
- We have tried and tested business models and approaches and a shareholder base of 100 people
- So, potential project owners, get in touch to be included
- And potential investors, be prepared for these new investment opportunities!



Our community fund

- £3,800 raised to date this winter from member donations of un-needed Winter Fuel Allowance etc.
- Building on last years work with Christians Against Poverty (CAP):
- Fuel Vouchers: 118 recipients of vouchers valued at £5030 to date (cost £750)
- Emergency warmth: 3 households provided with infra-red heaters & 6 with hot-water bottles and blankets
- New initiative: to repair boilers and/or provide draft-exclusion. Some complex ownership and access issues to overcome but one claimant whose boiler has been defunct for 3 years in pipeline for assistance.



Questions?

www.se24.co.uk